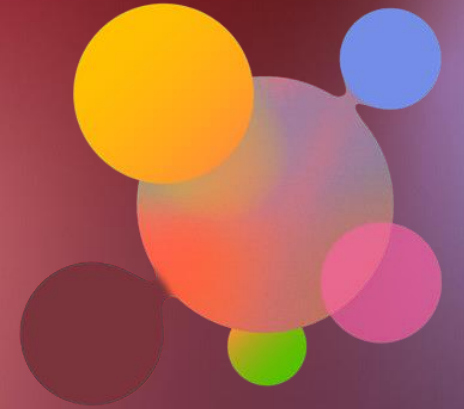




P&G 2ND TIER PROGRAM



**WE ARE
UNIQUE
AND
WE ARE
UNITED**

OBJECTIVE

**TO PROVIDE P&G PRIME
SUPPLIERS WITH INFORMATION
AND TOOLS TO BEGIN
REPORTING 2ND TIER SPEND IN
SUPPORT OF P&G'S SUPPLIER
DIVERSITY STRATEGY.**



CONTENT

P&G'S WIDEN THE SCREEN VIDEO

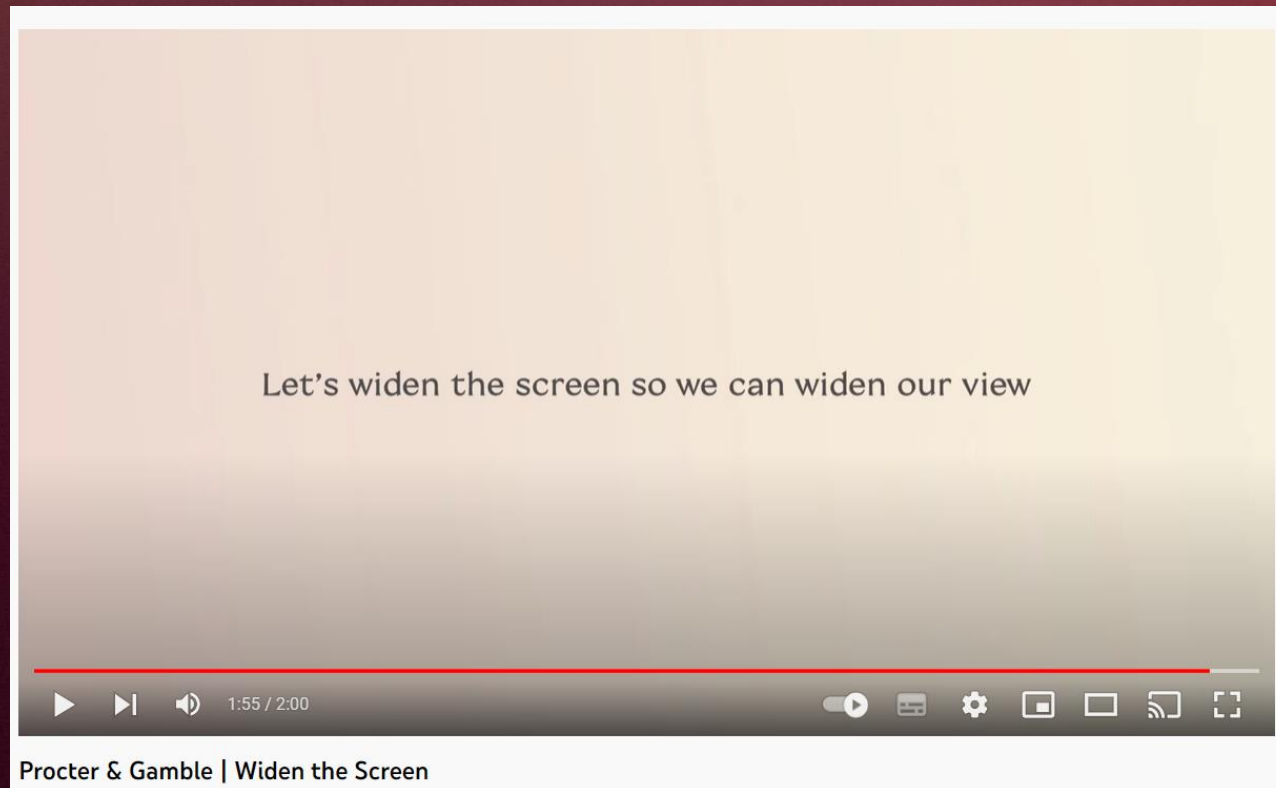
P&G'S SUPPLIER DIVERSITY STRATEGY

2ND TIER PROGRAM

**SUPPLIER DIVERSITY EXTERNAL
COUNCILS**



**CLICK HERE OR IN THE IMAGE
BELOW TO WATCH ONE OF OUR
WIDEN THE SCREEN VIDEOS**



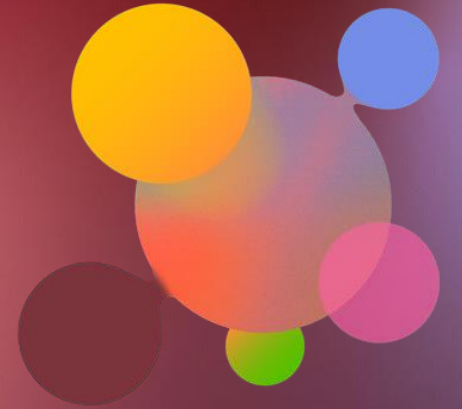
P&G's Supplier Diversity Ambition by 2030

**INCREASE GLOBAL SPEND FROM \$3
BILLION TO \$5 BILLION**

**DOUBLE THE NUMBER OF PRIME
SUPPLIERS REPORTING 2ND TIER**

**DOUBLE SPEND WITH BLACK OWNED
BUSINESSES**

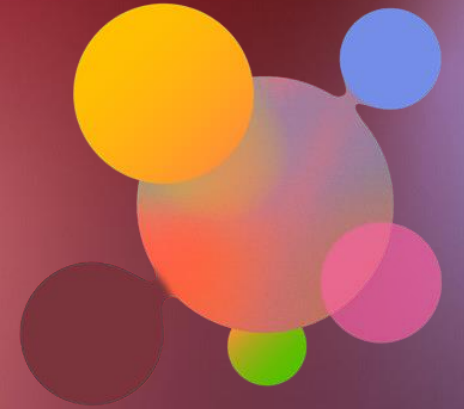
**REACH \$10BILLION ACCUMULATIVE
SPEND WITH WOMEN OWNED AND LED
BUSINESSES BY 2025**



**WE ARE
UNIQUE
AND
WE ARE
UNITED**

P&G'S SUPPLIER DIVERSITY STRATEGY

- **WORK WITH OUR BUSINESS LEADERS TO ESTABLISH SPECIFIC TARGETS**
- **MODIFY OUR SOURCING SYSTEMS**
- **LEVERAGE OUR WORLD-CLASS SUPPLY CHAIN FINANCING PROGRAM**
- **INCREASE 2ND TIER SPEND WITH ALL PRIME SUPPLIERS**



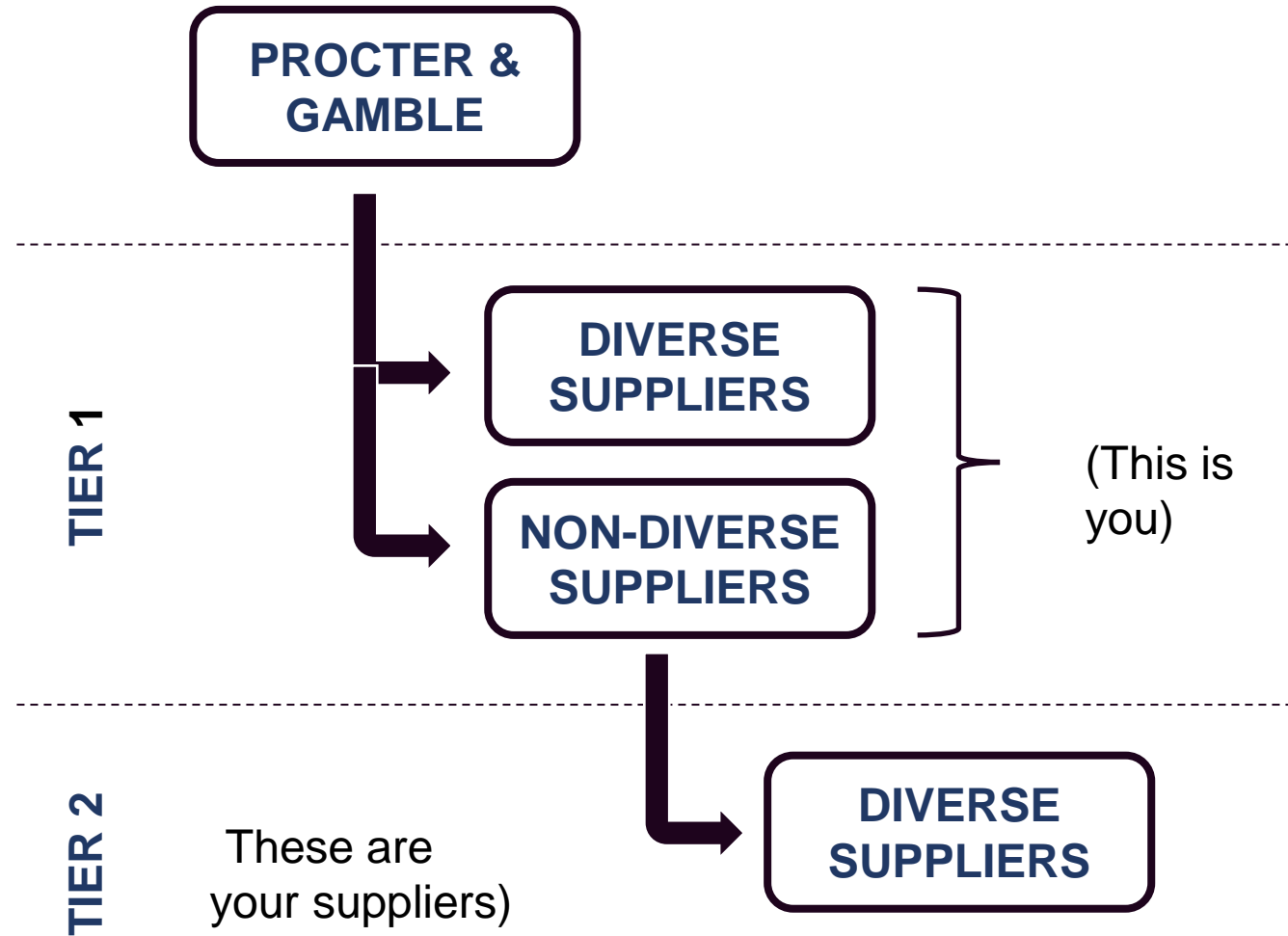
**WE ARE
UNIQUE
AND
WE ARE
UNITED**



**WHAT IS 2ND
TIER
SPEND?**

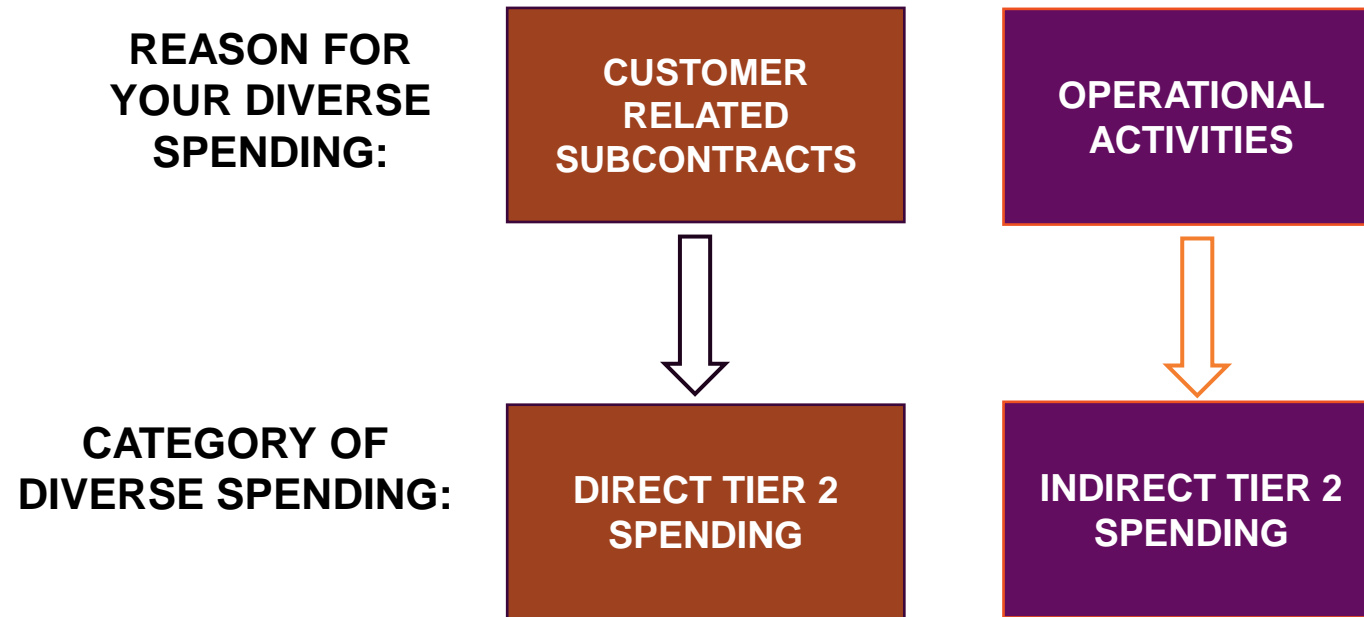
**HOW DO
YOU
REPORT TO
P&G?**

WHAT IS A 2ND TIER SPEND?



TYPES OF 2ND TIER SPEND

DIRECT versus INDIRECT



CRITERIA OF 2ND TIER SUPPLIERS

U.S:

- ❑ **Suppliers from multiple diversity categories including:**
 - ❑ **MBE*, WBE, SDVET, VET, LGBT, PwD**

Countries outside of the U.S:

- ❑ **WBE suppliers only**
- ❑ **Certified by WeConnect (agency) or supplier**
Self-registered

***Black, Hispanic, Native American, Asian-Pacific, Asian-Indian.**

For more detailed description, visit NMSDC website



WAYS YOU CAN IMPACT 2ND TIER

**WORK WITH THE P&G BUYER/SRO TO
DEVELOP A 2ND TIER PLAN**

ENROLL/TRAIN ON THE SUPPLIER.IO TOOL

**LEVERAGE SUPPLIER DIVERSITY EXTERNAL
COUNCILS**



P&G 2ND TIER REPORTING PROCESS



GETTING STARTED – BASIC INFORMATION

- ☐ **Report online every quarter**
- ☐ **Have your total company's sales to P&G in the US and overall company's sales in US available**
- ☐ **Submit spend by diversity category for Indirect Spend**
- ☐ **Submit company name and spend amount for each supplier for Direct spend**
 - **You can report Direct spend for Outside the US in the tool**



WHEN TO REPORT?

Q1 – JAS Due by October 31st

Q2 – OND Due by January 31st

Q3 – JFM Due by April 30th

Q4 – AMJ Due by July 31st



TOOLS & RESOURCES

INFORMATION: [HTTPS://PGSUPPLIER.COM/SUPPLIER-CITIZENSHIP#SUPPLIER-DIVERSITY](https://pgsupplier.com/supplier-citizenship#supplier-diversity) - THIS IS WHERE YOU'LL FIND MORE INFORMATION ABOUT OUR SUPPLIER DIVERSITY EFFORTS.

REPORTING ACCESS - TO ENROLL IN TIER 2 REPORTING, FOLLOW THIS LINK AND SELECT P&G.

ENROLL: [HTTPS://WWW.UNIFIEDTIER2.COM/REQUEST-REPORTING-ACCESS.HTML](https://www.unifiedtier2.com/request-reporting-access.html)



SUPPLIER DIVERSITY EXTERNAL COUNCILS



WHAT IS THE ROLE OF AN EXTERNAL SUPPLIER DEVELOPMENT COUNCIL?

- ☐ **CERTIFY DIVERSE OWNED SUPPLIERS**
- ☐ **PROVIDE DEVELOPMENT OPPORTUNITIES THROUGH CAPABILITY AND LEARNING**
- ☐ **CONNECT MBES WITH CORPORATE MEMBERS**

EXTERNAL COUNCILS & AFFILIATES

NATIONAL MINORITY SUPPLIER DEVELOPMENT COUNCIL (NMSDC):
[HTTP://WWW.NMSDC.ORG/NMSDC/](http://www.nmsdc.org/nmsdc/)

WOMEN'S BUSINESS ENTERPRISE NATIONAL COUNCIL (WBENC):
[HTTP://WWW.WBENC.ORG/REGIONAL-PARTNER-ORGANIZATIONS2](http://www.wbenc.org/regional-partner-organizations2)

NATIONAL GAY & LESBIAN CHAMBER OF COMMERCE (NGLCC):
[HTTP://WWW.NGLCC.ORG/AFFILIATE-CHAMBERS](http://www.nglcc.org/affiliate-chambers)

DEPARTMENT OF VETERAN AFFAIRS: [HTTP://WWW.VA.GOV/](http://www.va.gov/)

WECONNECT INTERNATIONAL:
[HTTPS://WECONNECTINTERNATIONAL.ORG/EN/](https://weconnectinternational.org/en/)

DISABILITY:IN: [HTTPS://DISABILITYIN.ORG/](https://disabilityin.org/)



WE HOPE THAT YOU ARE ABLE TO JOIN US ON OUR JOURNEY TO INCREASE 2ND TIER SPEND TO HELP US REACH \$5B BY 2030.

IF YOU ARE INTERESTED IN LEARNING MORE FROM OUR DIVERSE SUPPLIERS FROM TODAY, PLEASE REACH OUT DIRECTLY TO THEM OR SEND A NOTE TO:

CITIZENSHIP.IM.1@PG.COM

IF YOU WANT TO FIND OUT MORE ABOUT P&G'S SUPPLIER CITIZENSHIP PROGRAM, PLEASE GO TO: WWW.PGSUPPLIER.COM

